



**URJ
GREENE
FAMILY CAMP**

GFC@30 – THE CAMPAIGN FOR THE FUTURE



CAMPAIGN ELEMENTS	
SPORTS CENTER	1
PERFORMING ARTS	2
FACULTY CENTER	3
CAMPER HOUSING	4
OUTDOOR RECREATION	5
CAMP ENVIRONMENT	6



Former staff member, Rabbi Barry Block of Temple Beth-El, San Antonio, and son, Robert attend the 30th Anniversary Reunion.

“My camp experience truly instilled the Judaism I carry with me today and teach my children every day.”

-Sheila Sachnowitz Curl
Camper, staff member,
camper parent

After 30 Years, the URJ Greene Family Camp (GFC) has outgrown its campsite. Designed to serve several hundred people, it now serves several thousand people annually. The campsite and facilities are tired because of overuse, and in need of updating and expansion. A modern, state-of-the-art facility, capable of hosting a wide variety of programs will carry GFC into the 21st century.

Over the next two years, GFC will raise the funds necessary to construct new buildings, renovate existing facilities, and enhance the natural beauty of the Camp environment, all the while meeting the needs of tens of thousands of Reform Jews in the Texas-Oklahoma region.

GFC: OUR PAST AND OUR PRESENT

Greene Family Camp (GFC) was originally conceived as the home for the North American Federation of Temple Youth's Texas-Oklahoma Region (TOFTY, now NFTY-TOR). The funds to build the camp came from the URJ congregations of the Southwest Council, as well as individual philanthropists. Today, Greene provides programs for Jewish adults, children, and families. Over 12,000 individuals have participated in the programs held at GFC. In fact many former campers have met their spouses at Greene and

are now sending the next generation of campers and staff members to GFC.

The Camp's contribution to the Jewish world can be seen in the large number of former campers and staff members who have entered positions of volunteer and professional leadership in the Jewish community. Numerous studies have shown the connection between a Jewish residential summer camp experience and strong Jewish self-identity and communal involvement. Greene has been an important part of this phenomenon.

Ed Greene & Rabbi Sol Kaplan (z"l) at the Greene Family Camp groundbreaking (1975)



FAST FACTS ABOUT GREENE

- Campers and their families are committed to GFC as a *Jewish* camp, not simply a camp for Jewish children.
- The Camp program offers a balance between education and recreation and places a strong emphasis on personal growth and positive self-image.
- The program is well structured, with a ratio of one staff member to every three campers.
- The camp staff is composed of undergraduate & graduate students as well as professionals in various fields.
- Throughout the year, camp offers programs and activities that keep our community involved in Jewish life and education.

OUR VISION FOR THE FUTURE

The future of the URJ Greene Family Camp reflects the future needs of the Jewish community of the Southwest. There is a growing demand for programs that serve niche segments of the Jewish population. There is also a growing need for specialized programs such as those focused on the arts or athletics. This entails the need for additional specialized program space and staff.

Another growing trend is that of more children spending shorter periods of time at camp. This development means that GFC must be prepared to serve larger numbers of campers for shorter amounts of time, thus requiring more bed space.

The URJ Greene Family Camp is unique as the only denominationally-affiliated Jewish summer camp in Texas and Oklahoma.

Our vision is for a future where more of the community will utilize the Camp more frequently. GFC understands its mission is to service all ages, year-round. Its expanded campsite will host a myriad of programs focused on youth, teens, young adults, and families, all in addition to its summer camp program.



L'dor V'dor—Three generations come together to celebrate thirty years of Greene Family Camp. Jack & Davie Lou Solka, their three sons and their spouses, plus four of their grandchildren. All have been involved with GFC, where two of their sons met their wives.

KEY INITIATIVES

Looking at the trends that affect our region and our community, there are a number of goals that the Camp has set for itself. These initiatives will enhance its ability to bring its message of Jewish identity to the community:

- Expand the number and scope of activities offered to attract new campers. These activities will also provide new experiences to returning campers, extending the number of years that they remain in camp. Specialized programs for various groups of campers require specialized facilities and staff to support them.
- Appeal to and retain a larger number of our Jewish boys and teens through expanded and enhanced sports and adventure programs.
- Offer more significant programming in non-summer months. Additional adult and camper housing and indoor program facilities will enable the Camp to offer these programs.

“As students complete their bar or bat mitzvah, many break their connection with Jewish life. Camp is able to hold on to Jewish high school and college students.”

-Rabbi Alan Freedman of Temple Beth Shalom, Austin. Staff member, camper parent, regional rabbi

CURRENT FACILITIES

Greene Family Camp has served the Reform congregations of Texas and Oklahoma since its opening in 1976. The original facility was designed to accommodate 128 campers and 64 adults. Over the years, numerous projects have been completed, designed to better serve larger numbers of participants. It now has the capacity to house over 600 people.

GFC was designed as a barrier-free environment, and has accommodated many institutions that serve physically challenged individuals. It is proud to be one of the largest “accessible” camps in the country.

New cabins have been added in the original camper villages, and an additional camper village has been created. A major activities complex was built, as were new food service, health care, and administrative facilities. The lake has been expanded, and other outdoor recreational areas have been created or upgraded.

Funds for these additions and upgrades were raised from members of the camp community and other generous families through two specific capital campaigns and an ongoing annual giving campaign.



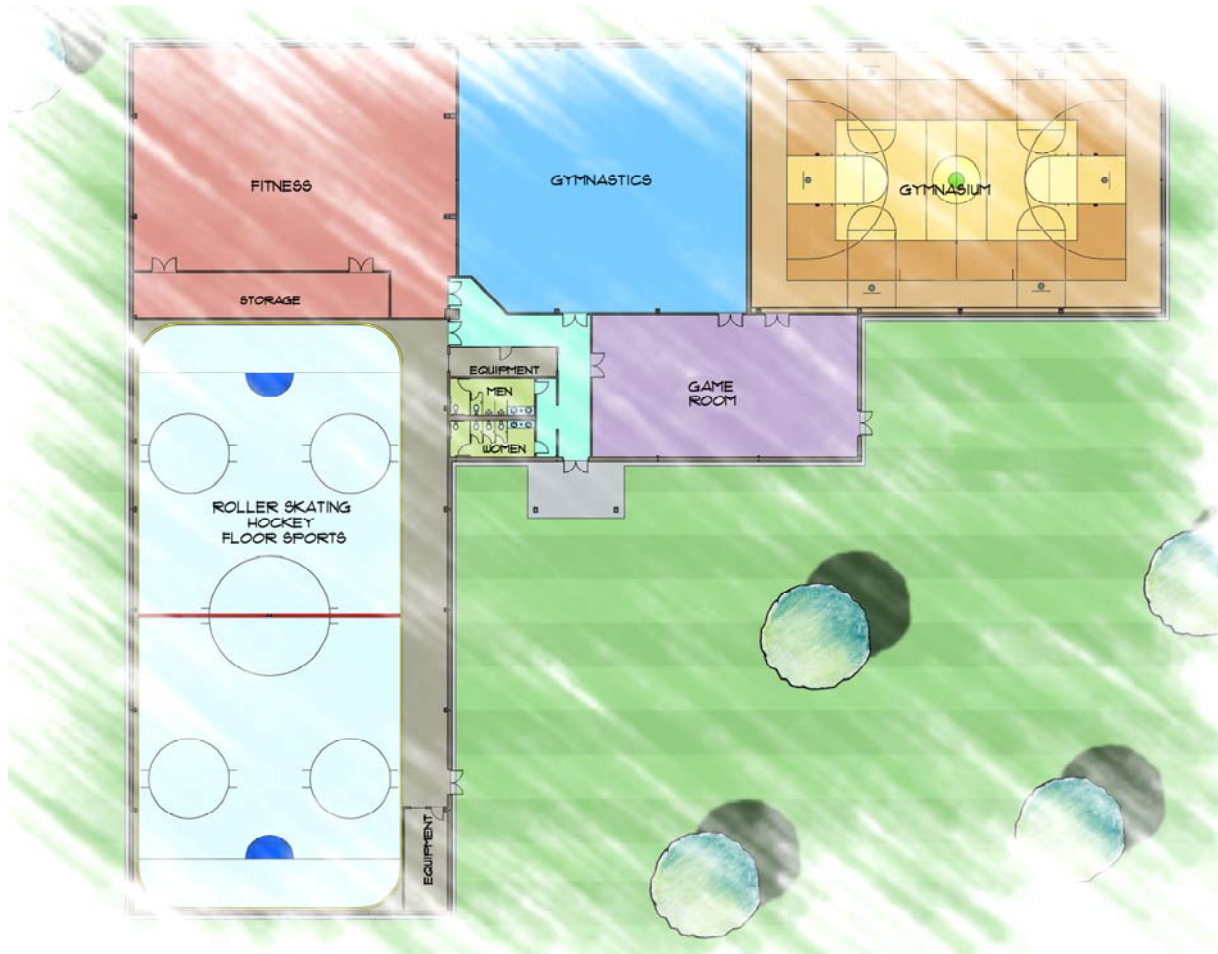
Camp Environment

One of the greatest assets of the Camp is its natural beauty. One of the major goals of this campaign is the enhancement of that asset.

GFC will implement a comprehensive landscaping and reforestation program to replace the trees lost due to disease.

In addition to tree replacement, the Camp will be planting trees and flowers throughout the site, providing more shade and a more beautiful environment.





WEST ELEVATION

Sports Center

Athletics builds community and teaches sportsmanship. The Sports Center will enhance the Camp's ability to offer a top-notch, comprehensive sports program.

A key focus of the campaign will be the construction of a new facility to include basketball & volleyball courts, space for floor sports & skating, gymnastics, fitness, and indoor games.

There will be tremendous utilization of this facility all year long, both by adults and children. During the summer months, air conditioning will allow its use, even in the heat of the afternoon. This will provide the opportunity to schedule sports activities during an otherwise unhealthy time.

This facility will allow GFC to professionalize its sports offerings, increasing the Camp's appeal to boys as well as girls. The fitness program will take a giant leap forward at a time when concerns about children's health are increasing.

Outdoor Recreation

In addition to the new indoor sports and recreation facilities, GFC will expand its programs through additions to the Ropes Course and upgrades to the outdoor sports facilities.

These upgrades will include outdoor lighting for night play, improved field surfaces, and the addition of new activity areas.

Performing Arts Center

GFC will redesign and transform the current Activities Center into a comprehensive Performing Arts Center. The new configuration will include dedicated areas for theater, music, dance, media, and computers. In an age of increasingly specialized activities, the Performing Arts Center will fill a growing need for new, cutting-edge programs. The new theater will feature a fully operational stage, equipped with flying scenery. Theatrical lighting and sound will also be provided. The dance studio will have appropriate floors, mirrors, and equipment for jazz, modern, and Israeli dance. The Visual Arts Center, Music Room and Video Studio will have the equipment necessary for professionals to work with campers in these areas. In addition to reconfiguring the current building's floor plan, extensive interior renovation will take place.

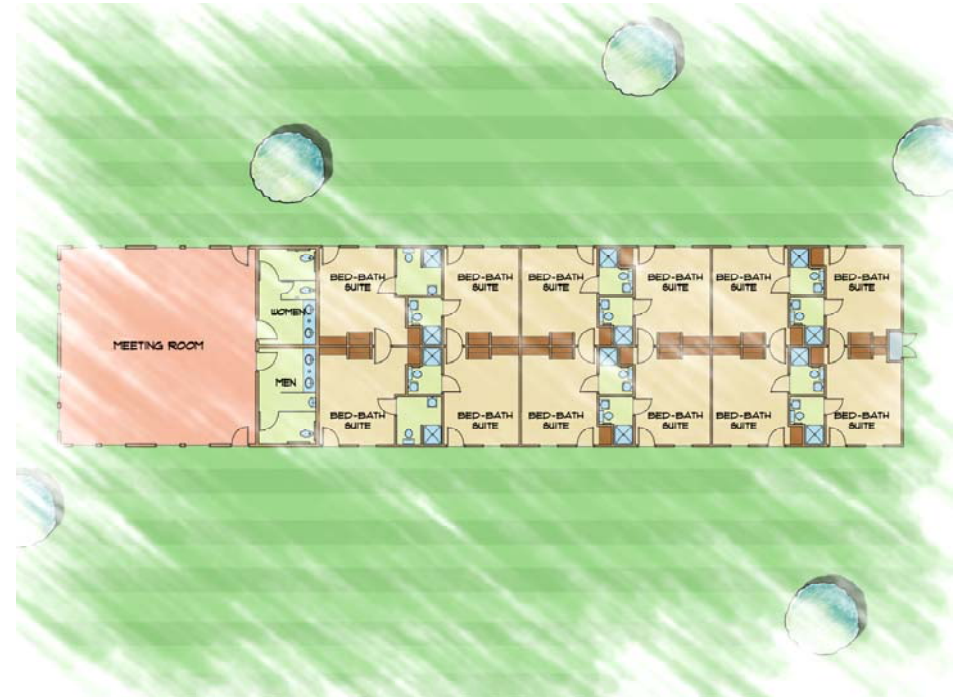
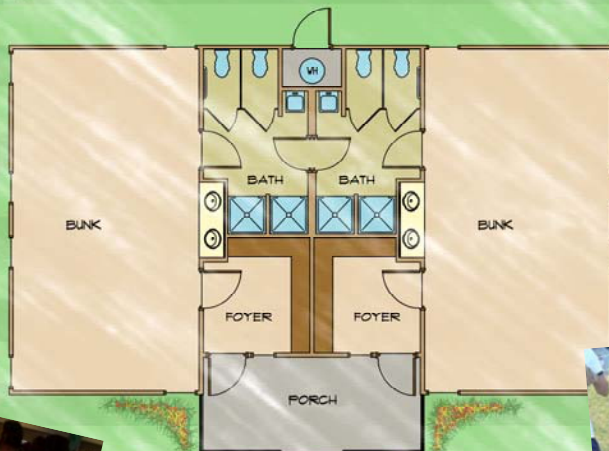


Camper Housing

GFC will complete the lower camper village with the construction of the final two cabins. The first four cabins in this new village were filled to capacity during the second year after completion.

These two cabins will fill also meet the need for more campers staying for shorter periods of time.

The bunk experience is the most important part of camp life. The bunk buildings in which our campers live must reflect the high standards maintained by our programs.



Faculty Center

Camp will add to its current staff and faculty housing inventory by building a third motel wing. It will include twelve private rooms with bathroom facilities and one large meeting room and lounge area.

As the camp program has gotten more specialized, more staff members are needed as teachers and activity specialists.

The faculty has grown both in size and in professionalism. While many staff members begin their careers as young adults, they now come to camp with their families.

In order to attract the best of the best, the Camp must provide appropriate housing options for these staff members, along with their spouses and their children.

In addition, the retreat program offered by the Camp has grown in popularity. Family and adult events require more private housing space. This housing unit will allow the camp to provide more numerous and more varied programs for the region.

HOW YOU CAN HELP

A campaign to fund improvements to Greene Family Camp has begun. Its success will provide a state-of-the-art camp site offering our children one of the most compelling camping and informal educational experiences. Yet, the campaign is about more than new buildings and improved facilities.

An expanded and refurbished Greene Family Camp will be an important site for Jewish living. It will provide our children and grandchildren with the knowledge, skills, pride, and determination to live Jewishly. A vibrant, joyful Jewish future rests today on a renewed Greene Family Camp. Join us as we build our future.



Members of the GFC Camp Committee & Friends. The Committee represents all of the Reform congregations in the Texas-Oklahoma region and meets regularly to discuss camp programs and policies.

URJ GREENE FAMILY CAMP

1192 Smith Lane
POB 1468
Bruceville, Texas 76630

Phone: 254-859-5411
Fax: 254-859-5225
greene.urjcamp.org
E-mail: gfc@urj.org

